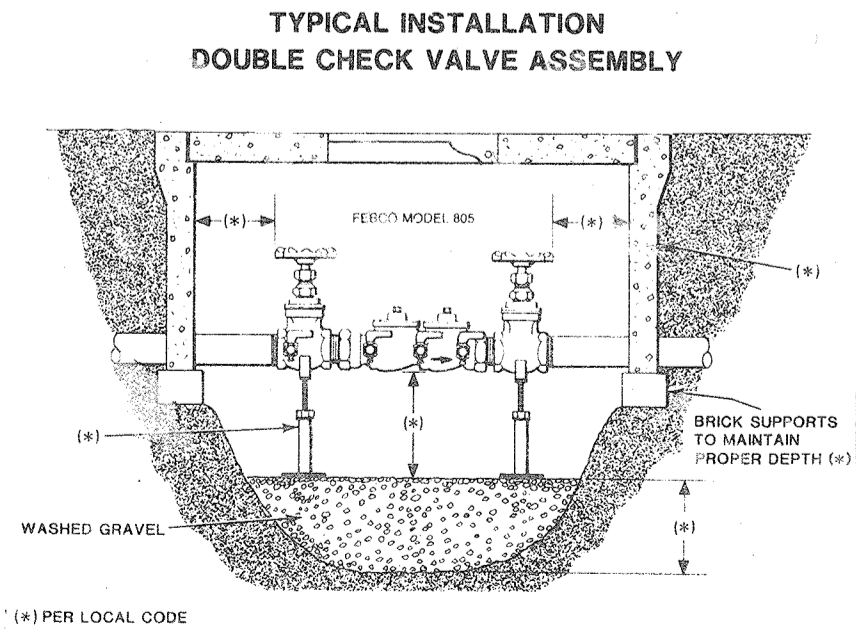
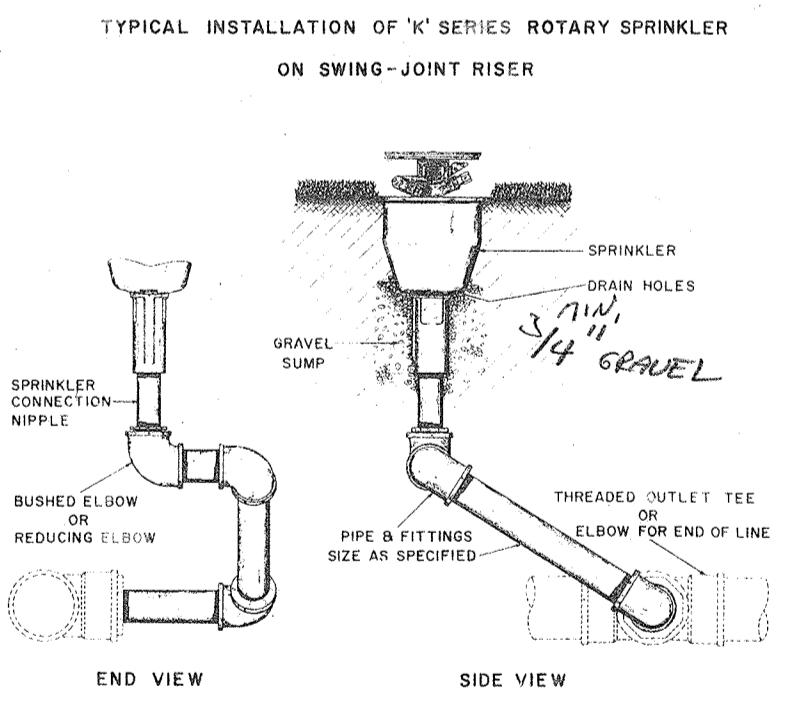


**LEGEND**

- Rotary Sprinkler Head, Full Circle, All bronze head, Heavy Duty ABS Plastic Housing, Dial Nozzles-7/32x11/64, - 17.5 GPH, 120 Dia. @ 60# PSI. With Screw Driver Arm Spring Adjustment. Weather-matic PK70H, or approved equal.
- Rotary Sprinkler Head, Full Circle, as above with Single Nozzle 1/4" - 15.0 GPH, 38" Radius, @ 70# PSI, with Diffuser Pin in Nozzle. Screw Driver Arm Spring Adjustment. Weather-matic PK 60F or Approved Equal.
- ⊙ Rotary Sprinkler Head, Part Circle, as above with Single Nozzle 1/4" - 15.0 GPH, 38" Radius, @ 70# PSI, with Diffuser Pin in Nozzle. Screw Driver Arm Spring Adjustment. Weather-matic PK70PC. Or Approved Equal.
- ⊙ Rotary Sprinkler Head, Part Circle, as above with Single Nozzle 7/32" - 10.6 GPH - 48" Rad. @ 60# PSI. With Diffuser Pin in Nozzle. Weather-matic PK 60PC. Or Approved Equal.
- TR Symbol located by a head indicates that head is to be equipped with a heavy rubber cover and rubber ring on head, with a "Turf Top". (Super-Turf Brand of artificial turf bonded to the rubber cover).
- CV Symbol located by a head indicates that head to be equipped with a built in check valve (removable from the top), to prevent low head drainage of the lines.
- ⊕ Electric Valves, Brass, with flow control. Size to be 3" except as noted on plan. Weather-matic #8024B or approved equal. Valves and control to be of same manufacture. Install valves in 12" Plastic valve boxes.
- ⊞ Controller. 20 stations, with solid state timing, mounted in heavy 14 gauge vandal resistant housing. Weather-matic 5SBA-20. No alternate. This control is to match balance of controls in the Park System.
- Quick Coupler Valve. 1" Weather-matic V100, or approved equal. Install on 1" Galvanized steel double swing joints.
- Main Line - PVC Class 200, Solvent welded fittings. NSF rated.
- Circuit Lines. PVC Class 160. Solvent welded fittings. NSF rated.
- ⊞ Isolation Valve. Gate Valve, line size. Brass or Cast Iron. Install in PVC sleeve with cap. Red & White #206 or approved equal.



SCALE 1" = 60'

TWO RIVERS PARK  
LAWN SPRINKLER SYSTEM  
GLENWOOD SPRINGS COLO.  
JAN 10 1983 LRR  
Sheet 3 of 10